

Funeral Consumers Alliance of Eastern Massachusetts

The Memorial Society, Inc.
66 Marlborough Street, Boston, MA 02116
www.fcaemass.org
Telephone 617-859-7990
Fax 617-245-9911

2009 Funeral Service Survey

Funeral Home MANN + RODGERS FUNERAL HOME
Director(s) A. GERALD RODGERS
Street address: 44 PERKINS ST.
City/Town JAMAICA PLAIN, MA Zip Code 02130
Telephone 617-529-2500 Fax 617-529-4077
Email _____ Website MANNANDRODGERS.COM

Non-Traditional Funeral Service Options

Are you willing to provide services for **part of a funeral** such as death registration and transportation with the family handling the rest? IF Allowed yes no

Will you handle a wake at a residence instead of your funeral home? yes no

Do you provide refrigeration facilities? yes no

Is viewing without embalming available? FAMILY ONLY yes no

Does your direct cremation listed price include:

Crematory fee yes no

Permits yes no

Other fees COMPLETE START TO FINISH yes no

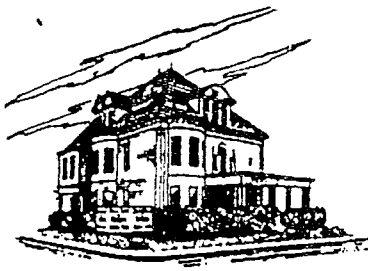
Which crematory(ies) do you use for cremation? Duxbury, Forest Hills + Family Choice

Will you allow/use other crematories? yes no

Please attach your General Price List with this survey.

Fax: 617-245-9911 OR Mail: FCAEM, 66 Marlborough Street, Boston, MA 02116

Thank you for your cooperation in completing and returning this survey and your GPL by February 13, 2009 to the Funeral Consumers Alliance of Eastern Massachusetts. Please note that we cannot accept faxes over 9 pages in length.



Mann & Rodgers

FUNERAL HOME, INC.

44 PERKINS STREET

P.O. BOX 27

JAMAICA PLAIN, MA 02130

Tel: 617-522-2500

Fax: 617-522-4077

AUGUST 2008

GENERAL PRICE LIST

A. Gerald Rodgers

These prices are effective as of 11/01/08 but are subject to change without notice

The goods and services shown below are those we can provide to our customers. You may choose only those items you desire. However, any funeral arrangements you select will include a charge for our services. If legal or other requirements mean you must buy any items you did not specifically ask for, we will explain the reason in writing on the statement we provide describing the funeral goods and services you selected.

This list does not include prices for certain items that you may ask us to buy for you, such as cemetery or crematory services, flowers, and newspaper notices. The prices for those items will be shown on your bill or the statement describing the funeral goods and services you selected. We charge you for our services in buying these items.

TRANSFER OF PERSON TO FUNERAL HOME
 Within radius of _____ miles \$ 425

FUNERAL HEARSE
 Within radius of _____ miles \$ 375

LIMOUSINE
 Within radius of _____ miles \$ 345

FLOWER CAR
 Within radius of _____ miles \$ 345

SERVICE CAR - FLOWER DELIVERY
 Within radius of 25 miles \$ 100

SERVICE - CAR OTHER USE
 Within radius of 25 miles \$ 75

PROCURING MEDICAL & LEGAL PERMITS \$ 175

EMBALMING \$ 1025

Performed by licensed Embalmers who are skilled in the knowledge of anatomy and by the use of specially prepared chemicals achieve a most satisfactory appearance.

Except in certain special cases, embalming is not required by law. Embalming may be necessary, however, if you select certain funeral arrangements, such as a funeral with viewing. If you do not want embalming, you usually have the right to choose an arrangement which does not require you to pay for it, such as a direct cremation or immediate burial.

OTHER PREPARATION OF THE BODY

Autopsies \$ 675
 Dressing, Casketing & Cosmetology \$ 100
 Restoration (Per Hour) \$ 75
 Special Precautions (Per Hour) \$ 100
 Washing and Disinfecting
 when no embalming \$ 425

CHAPEL FOR VISITATION \$ 975
 GENERAL FACILITY CHARGE \$ 425

The general use of our Funeral Home including the offices, lounges, operating room and parking facilities are involved in every instance, not only as a control point from which to operate, but ready and available 24 hours each day.

CHAPEL FOR FUNERAL \$ 975

EQUIPMENT FOR FACILITY OTHER THAN FUNERAL HOME, CHURCH SERVICE /CREMATORY \$ 975

MINIMUM SERVICES OF FUNERAL DIRECTOR AND STAFF \$ 1400

Our minimum Professional Service Charge includes, but is not limited to, response to initial request for services, arrangement conference determining services desired, preparing and filing newspaper notices, consultation with Clergy, Cemetery, Crematorium, Hospitals, Nursing Homes plus scheduling of Funeral Service and Equipment. It is available 24 hours each day.

This fee for our services will be added to the total cost of the funeral arrangements you select. This fee is already included in our charges for direct cremations, immediate burials and forwarding or receiving remains.

ADDITIONAL SERVICES OF DIRECTOR AND STAFF

Service in Church \$ _____
 Service at Funeral Home \$ _____
 Service in Facility other than Funeral Home -
 Wake to Church \$ 975

CASKETS	<u>\$ 920</u>	&	<u>\$ Up</u>
(A complete list will be provided at our funeral home)			
OUTER BURIAL CONTAINERS	<u>\$ 600</u>	&	<u>\$ Up</u>
(A complete list will be provided at our funeral home)			
RENTED CASKET	<u>\$ 895</u>	to	<u>\$ _____</u>
Clothing	<u>\$ 10</u>	to	<u>\$ 200</u>
ACKNOWLEDGEMENT CARDS	per 100		<u>\$ 75</u>
REGISTER BOOK			<u>\$ 50</u>
PRAYER CARDS - with picture or all laminated extra.	per 100		<u>\$ 120</u>
FORWARDING PERSON TO ANOTHER FUNERAL HOME including a tray			<u>\$ 2365</u>

This charge includes local removal from place of death, services of some staff members, embalming, receptacle for body, necessary authorization, transportation to airport or railroad. Does not include the services of the entire staff or the use of facilities for any visitation and/or ceremonies prior to forwarding of the body.

The cost of other than local transportation in vehicles of the Funeral Home is \$ 3.60 per mile one way.

RECEIVING OF PERSON FROM ANOTHER FUNERAL HOME	<u>\$ 1230</u> + Services
--	------------------------------

This change includes temporary shelter of the body transportation to cemetery or crematory and required services of some of the staff members. Does not include the services of the entire staff or the use of facilities for viewing or for funeral rites/ceremonies.

IMMEDIATE BURIALS

Price Range	<u>\$ 2750</u> to	<u>\$ _____</u>
Selective of Service		<u>\$ _____</u>

Our charge for a immediate burial (without any attendant rites or ceremonies) includes:

Removal and Shelter of the person.
Local transportation to crematory.
Necessary services of staff and authorizations.

1. IMMEDIATE BURIAL with casket
Grey Cloud \$ 920
2. IMMEDIATE BURIAL with
alternative container & cash adv. \$ 2750
+ cemetery
3. IMMEDIATE BURIAL with container
provided by purchaser & cash adv. \$ 2115
+ cemetery

DIRECT CREMATIONS

Price Range	<u>\$ 2750 & Up</u>
-------------	-------------------------

Our charge for a direct cremation (without any attendant rites or ceremonies) includes:

Removal and Shelter of the person.
Local transportation to crematory.
Necessary services of staff and authorizations.

If you want to arrange a direct cremation, you can use an unfinished wood box or an alternative container. Alternative containers can be made of materials like heavy cardboard or composition materials (with or without outside covering) or pouches of canvas.

1. DIRECT CREMATION with
unfinished box 500
& cash advances \$ 3250
2. DIRECT CREMATION with
alternative container
& cash advances \$ 3150
3. DIRECT CREMATION with container
provided by purchaser
& cash advances \$ 2750

Client


Funeral Director

Whitman Burial Vault Co.

OUTER BURIAL CONTAINER PRICE LIST

Funeral Home: Mann & Rodgers Funeral Home

Street Address: 44 Perkins St.

City, Town, State & Zip Code: Jamaica Plain, MA 02130

These prices are effective as of November 1, 2008 but are subject to change without notice. In most areas of the country, no state or local law makes you buy a container to surround the casket in the grave. However, many cemeteries ask that you have such a container so that the grave will not sink in. Either a burial vault or a grave liner will satisfy these requirements.

PRESTIGE BRONZE Burial Vault

Seamless polystyrene inner liner bonded to reinforced concrete. Polished bronze sheet lining. Base and cover sealed by laboratory tested butyl compound. Matching two tone embossed finish, bronze plated extension bars. Name-date plaque and religious or fraternal emblem adorn cover.

\$ 3575.00

PRESTIGE COPPER Burial Vault

Seamless polystyrene inner liner bonded to reinforced concrete. Gleaming copper sheet interior lining. Base and cover sealed by laboratory tested butyl compound. Matching two tone embossed finish, six handsome casket-style handles. Name-date plaque and religious or fraternal emblem adorn cover.

\$ 3115.00

PRESTIGE STAINLESS STEEL Burial Vault

Seamless polystyrene inner liner bonded to reinforced concrete. Brilliant stainless steel interior lining. Base and cover sealed by laboratory tested butyl compound. Matching two tone embossed finish, six handsome casket-style handles. Name-date plaque and religious or fraternal emblem adorn cover.

\$ 2715.00

PATRIOT STAINLESS STEEL Burial Vault

Seamless polystyrene inner liner bonded to reinforced concrete. Brilliant stainless steel interior lining. Base and cover sealed by laboratory tested butyl compound. Blue and silver finish with American flag and branch of military service emblem adorn vault cover. Six casket style handles are fixed to vault cover. Name plaque and religious emblem adorn cover.

\$2715.00

PRINCESS STAINLESS STEEL Burial Vault

Seamless polystyrene inner liner bonded to reinforced concrete. Brilliant stainless steel interior lining. Base and cover sealed by laboratory tested butyl compound. Pink and white finish with rose emblem adorn vault cover. Six casket style handles are fixed to vault cover. Name plaque and religious emblem adorn cover.

\$2715.00

REGAL Burial Vault

Seamless polystyrene inner liner with the look of white sculptured marble bonded to reinforced concrete. Base and cover sealed by laboratory tested butyl compound. Matching cover shield, two goldtone extension bar handles and rich two-tone embossed paint finish. Name-date plaque and religious or fraternal emblem adorn cover.

\$2075.00

ETERNA GARD Burial Vault

Seamless polystyrene inner liner bonded to reinforced concrete. Base and cover sealed by laboratory tested butyl compound. Wide range of two-tone finishes available. six casket-style handles. Name-date plaque and religious or fraternal emblem adorn cover.

\$1520.50

PATRIOT Burial Vault

Seamless polystyrene inner liner bonded to reinforced concrete. Base and cover sealed by laboratory tested butyl compound. Blue and silver finish with American flag and branch of military service emblem adorn vault cover. Name-date plaque and religious emblem adorn cover.

\$1340.00

CENTENNIAL Burial Vault

Seamless polystyrene inner liner bonded to reinforced concrete. Base and cover sealed by laboratory tested butyl compound. Wide range of color finishes. Name-date plaque and religious or fraternal emblem adorn cover.

\$1300.00

ROYAL IMPERIAL Burial Vault

Reinforced concrete construction. Tongue and groove seal. Outside of vault coated with moisture-repellent textured asphalt. Choice of several colors, name-date plaque and religious or fraternal emblem.

\$1010.00

ROYAL Burial Vault

Reinforced concrete construction. Tongue and groove seal. Cover painted bronze, copper, silver or gold with name plate and emblem.

\$ 940.00

CONCRETE GRAVE BOX

Reinforced concrete construction. Two piece cover, one piece base with two holes in base for drainage. Non-sealed unit.

\$ 690.00

**\$70.00 Installation fee will apply in all cases. **Add \$70.00 for Installation Fee*

INSTALLATION & SERVICING CHARGES EXTRA

WARRANTIES: Our funeral home makes no representations or warranties about the protective vault of certain caskets or outer burial containers other than those made by the manufacturers thereof. **NO OTHER WARRANTIES, EXPRESSED OR IMPLIED, INCLUDING, BUT NOT LIMITED TO, WARRANTIES OF MERCHANTABILITY OR FITNESS FOR A PARTICULAR PURPOSE, ARE EXTENDED BY THE SELLER.**

MANN & RODGERS FUNERAL HOME, INC.

44 Perkins Street
 Jamaica Plain, Massachusetts 02130
 617-522-2500 • Fax 617-522-4077

STATEMENT OF FUNERAL GOODS AND SERVICES SELECTED

Charges are only for these items that are used. If we are required by law to use any items, we will explain in writing below.

If you selected a funeral which required embalming, such as a funeral with viewing, you may have to pay for embalming. You do not have to pay for embalming you did not approve if you selected arrangements such as a direct cremation or immediate burial. If we charged for embalming, we will explain why below.

FULL TRADITIONAL

Effective: November 1, 2008

Funeral Services for _____

Date of Funeral Service _____

1. PROFESSIONAL SERVICES

Preparation of Deceased \$ 1025.00
 Staff Services, including
 arrangements and direction
 of all necessary details \$ 1375.00
 Procuring all necessary
 papers and permits \$ 175.00
 Notifying cemetery, clergy,
 and all social services \$ 125.00
 Other preparation of body ... \$ _____
Total for Professional Services \$ 2700.00

2. FUNERAL HOME FACILITIES

Use of operating room and
 holding of body \$ 425.00
 Use of home for viewing \$ 975.00
 Use of facility for
 funeral ceremony \$ _____
 Holding & transfer
 of equipment to church \$ _____
 Refrigeration \$ _____
Total for Funeral Home Facilities \$ 1400.00

3. TRANSPORTATION

Removal to Funeral Home
 ... Local (15 miles) \$ 425.00
 Funeral Coach \$ 375.00
 Other Automotive
 Equipment to Bourne \$ (125.00)
 \$ _____
Total for Transportation \$ 800.00

4. MERCHANDISE

Casket \$ _____
 Grave Box \$ _____
 Clothing \$ _____
 Cremation Tray \$ _____
 Vault \$ _____
 Urn \$ _____
 Acknowledgment Books \$ 75.00
 Register Books \$ 50.00
Total for Merchandise \$ _____

5. CASH ADVANCED

Cemetery charges \$ _____
 Crematory charges \$ _____
 Transportation (Describe) \$ _____
 Clergy honorarium \$ _____
 Church \$ _____
 Organist, Soloist \$ _____
 Musicians honorarium \$ _____
 Flowers \$ _____
 Paid death notices \$ _____
 Certified copies of death certificates
 _____ at \$ _____ each \$ _____
 Gratuities \$ _____
 Hairdresser or barber \$ _____
 Telephone and Telegraph \$ _____
 Medical Examiner \$ _____
 Out of Town Funeral Director \$ _____
 Flower Car \$ _____
 Air Fare \$ _____
 Air Tray \$ _____
 Box or Vault Installation \$ _____
 Priest at Grave \$ _____
 Estate Fee \$ _____
 Consulate \$ _____
 Prayer Cards \$ _____
 Others \$ _____
Total Cash Advanced \$ _____

SUMMARY OF CHARGES

A. Services \$ 4900.00
 B. Merchandise \$ _____
 C. Cash Advances \$ _____
Total of all selections \$ _____
 Paid at time of or prior to
 arrangements \$ _____
Balance due \$ _____

Reason for embalming _____

Public viewing and/or services

Transfer from State to State

Air Shipment

WE HAVE RECEIVED ALL PRICE LISTS:

(General, Casket and Outer Burial Container)

Payments Required as services rendered

If any law, cemetery, or crematory requirements have required the purchase of any of the items listed above, the law or requirement is explained below.

Cemetery requires a grave box or vault.

MANN & RODGERS FUNERAL HOME, INC.

44 Perkins Street
 Jamaica Plain, Massachusetts 02130
 617-522-2500 • Fax 617-522-4077

STATEMENT OF FUNERAL GOODS AND SERVICES SELECTED

Charges are only for these items that are used. If we are required by law to use any items, we will explain in writing below.

If you selected a funeral which required embalming, such as a funeral with viewing, you may have to pay for embalming. You do not have to pay for embalming you did not approve if you selected arrangements such as a direct cremation or immediate burial. If we charged for embalming, we will explain why below.

TWO HOURS VISITATION

Effective: November 1, 2008

Date of Funeral Service

Funeral Services for

1. PROFESSIONAL SERVICES

Preparation of Deceased \$ 1025.00
 Staff Services, including
 arrangements and direction
 of all necessary details \$ 1275.00
 Procuring all necessary
 papers and permits \$ 175.00
 Notifying cemetery, clergy,
 and all social services \$ 125.00
 Other preparation of body ... \$ _____
Total for Professional Services \$ 2600.00

2. FUNERAL HOME FACILITIES

Use of operating room and
 holding of body \$ 425.00
 Use of home for viewing \$ 900.00
 Use of facility for
 funeral ceremony \$ _____
 Holding & transfer
 of equipment to church \$ _____
 Refrigeration \$ _____
Total for Funeral Home Facilities \$ 1325.00

3. TRANSPORTATION

Removal to Funeral Home
 ... Local (15 miles) \$ 425.00
 Funeral Coach \$ 375.00
 Other Automotive
 Equipment to Bourne \$ (125.00)
 \$ _____
Total for Transportation \$ 800.00

4. MERCHANDISE

Casket \$ _____
 Grave Box \$ _____
 Clothing \$ _____
 Cremation Tray \$ _____
 Vault \$ _____
 Urn \$ _____
 Acknowledgment Books \$ 75.00
 Register Books \$ 50.00
Total for Merchandise \$ _____

5. CASH ADVANCED

Cemetery charges \$ _____
 Crematory charges \$ _____
 Transportation (Describe) \$ _____
 Clergy honorarium \$ _____
 Church \$ _____
 Organist, Soloist \$ _____
 Musicians honorarium \$ _____
 Flowers \$ _____
 Paid death notices \$ _____
 Certified copies of death certificates
 _____ at \$ _____ each \$ _____
 Gratuities \$ _____
 Hairdresser or barber \$ _____
 Telephone and Telegraph \$ _____
 Medical Examiner \$ _____
 Out of Town Funeral Director \$ _____
 Flower Car \$ _____
 Air Fare \$ _____
 Air Tray \$ _____
 Box or Vault Installation \$ _____
 Priest at Grave \$ _____
 Estate Fee \$ _____
 Consulate \$ _____
 Prayer Cards \$ _____
 Others \$ _____
Total Cash Advanced \$ _____

SUMMARY OF CHARGES

A. Services \$ 4725.00
 B. Merchandise \$ _____
 C. Cash Advances \$ _____
Total of all selections \$ _____
 Paid at time of or prior to
 arrangements \$ _____
Balance due \$ _____

Reason for embalming

Public viewing and/or services

Transfer from State to State

WE HAVE RECEIVED ALL PRICE LISTS:

(General, Casket and Outer Burial Container)

Payments Required as services rendered

If any law, cemetery, or crematory requirements have required the purchase of any of the items listed above, the law or requirement is explained below.

Cemetery requires a grave box or vault.

MANN & RODGERS FUNERAL HOME, INC.

44 Perkins Street
Jamaica Plain, Massachusetts 02130
617-522-2500 • Fax 617-522-4077

STATEMENT OF FUNERAL GOODS AND SERVICES SELECTED

Charges are only for these items that are used. If we are required by law to use any items, we will explain in writing below.

If you selected a funeral which required embalming, such as a funeral with viewing, you may have to pay for embalming. You do not have to pay for embalming you did not approve if you selected arrangements such as a direct cremation or immediate burial. If we charged for embalming, we will explain why below.

Church or Funeral Home Service

Funeral Services for

Effective: November 1, 2008

Date of Funeral Service

1. PROFESSIONAL SERVICES

Preparation of Deceased \$ 1025.00
Staff Services, including
arrangements and direction
of all necessary details \$ 1275.00
Procuring all necessary
papers and permits \$ 175.00
Notifying cemetery, clergy,
and all social services \$ 125.00
Other preparation of body... \$ _____
Total for Professional Services \$ 2600.00

2. FUNERAL HOME FACILITIES

Use of operating room \$ 425.00
Use of home for viewing \$ _____
Use of facility for
funeral ceremony \$ _____
Holding & transfer
of equipment to church \$ 925.00
Refrigeration \$ _____
Total for Funeral Home Facilities \$ 1350.00

3. TRANSPORTATION

Removal to Funeral Home
... Local (15 miles) \$ 425.00
Funeral Coach \$ 375.00
Other Automotive
Equipment to Bourne \$ 125.00
..... \$ _____
Total for Transportation \$ 800.00

4. MERCHANDISE

Casket \$ _____
Grave Box \$ _____
Clothing \$ _____
Cremation Tray \$ _____
Vault \$ _____
Urn \$ _____
Acknowledgment Books \$ 75.00
Register Books \$ 50.00
Total for Merchandise \$ _____

5. CASH ADVANCED

Cemetery charges \$ _____
Crematory charges \$ _____
Transportation (Describe) \$ _____
Clergy honorarium \$ _____
Church \$ _____
Organist, Soloist \$ _____
Musicians honorarium \$ _____
Flowers \$ _____
Paid death notices \$ _____
Certified copies of death certificates
_____ at \$ _____ each \$ _____
Gratuities \$ _____
Hairdresser or barber \$ _____
Telephone and Telegraph \$ _____
Medical Examiner \$ _____
Out of Town Funeral Director \$ _____
Flower Car \$ _____
Air Fare \$ _____
Air Tray \$ _____
Box or Vault Installation \$ _____
Priest at Grave \$ _____
Estate Fee \$ _____
Consulate \$ _____
Prayer Cards \$ _____
Others \$ _____
Total Cash Advanced \$ _____

SUMMARY OF CHARGES

A. Services \$ 4750.00
B. Merchandise \$ _____
C. Cash Advances \$ _____
Total of all selections \$ _____
Paid at time of or prior to
arrangements \$ _____
Balance due \$ _____

Reason for embalming

Public viewing and/or services

Transfer from State to State

WE HAVE RECEIVED ALL PRICE LISTS:

(General, Casket and Outer Burial Container)

Payments Required as services rendered

If any law, cemetery, or crematory requirements have required the purchase of any of the items listed above, the law or requirement is explained below.

Cemetery requires a grave box or vault.

MANN & RODGERS FUNERAL HOME, INC.

44 Perkins Street
 Jamaica Plain, Massachusetts 02130
 617-522-2500 • Fax 617-522-4077

STATEMENT OF FUNERAL GOODS AND SERVICES SELECTED

Charges are only for these items that are used. If we are required by law to use any items, we will explain in writing below.

If you selected a funeral which required embalming, such as a funeral with viewing, you may have to pay for embalming. You do not have to pay for embalming you did not approve if you selected arrangements such as a direct cremation or immediate burial. If we charged for embalming, we will explain why below.

DIRECT CREMATION

Effective: November 1, 2008

Date of Funeral Service _____

Funeral Services for _____

1. PROFESSIONAL SERVICES

Preparation of Deceased \$ 425.00
 Staff Services, including
 arrangements and direction
 of all necessary details \$ 650.00
 Procuring all necessary
 papers and permits \$ 125.00
 Notifying cemetery, clergy,
 and all social services \$ 125.00
 Other preparation of body... \$ _____
Total for Professional Services \$ 1325.00

*No Embalming
 WASHING &
 CLOSING - CLOSING
 FOR TURNS*

2. FUNERAL HOME FACILITIES

Use of operating room \$ 275.00
 Use of home for viewing \$ (175.00) if used
 Use of facility for
 funeral ceremony \$ _____
 Holding & transfer
 of equipment to church \$ _____
 Refrigeration & Holding \$ 125.00 (after 48 hrs.)
Total for Funeral Home Facilities \$ 275.00

3. TRANSPORTATION

Removal to Funeral Home
 ... Local (15 miles) \$ 425.00
 Funeral Coach \$ 325.00
 Other Automotive
 Equipment \$ _____
 \$ _____
Total for Transportation \$ 750.00

4. MERCHANDISE

Casket \$ _____
 Grave Box \$ _____
 Clothing Pouch \$ 75.00
 Cremation Tray \$ 325.00
 Vault \$ _____
 Urn \$ _____
 Acknowledgment Books \$ _____
 Register Books \$ _____
Total for Merchandise \$ 400.00

5. CASH ADVANCED

Cemetery charges \$ _____
 Crematory charges - Forest Hills \$ 400.00
 Crematory charges - Duxbury \$ 230.00
 Transportation (Describe) \$ _____
 Clergy honorarium \$ _____
 Church \$ _____
 Organist, Soloist \$ _____
 Musicians honorarium \$ _____
 Flowers \$ _____
 Paid death notices \$ _____
 Certified copies of death certificates
 _____ at \$ _____ each \$ _____
 Gratuities \$ _____
 Hairdresser or barber \$ _____
 Telephone and Telegraph \$ 75.00
 Medical Examiner \$ _____
 Out of Town Funeral Director \$ _____
 Flower Car \$ _____
 Air Fare \$ _____
 Air Tray \$ _____
 Box or Vault Installation \$ _____
 Priest at Grave \$ _____
 Estate Fee \$ _____
 Consulate \$ _____
 Prayer Cards \$ _____
 Others \$ _____
Total Cash Advanced \$ _____

SUMMARY OF CHARGES

A. Services \$ 2350.00
 B. Merchandise \$ 400.00
 C. Cash Advances \$ _____
Total of all selections \$ _____
 Paid at time of or prior to
 arrangements \$ _____
Balance due \$ _____

WE HAVE RECEIVED ALL PRICE LISTS:

(General, Casket and Outer Burial Container)

Payments Required as services rendered

If any law, cemetery, or crematory requirements have required the purchase of any of the items listed above, the law or requirement is explained below.

Cemetery requires a grave box or vault.

Reason for embalming _____

Public viewing and/or services _____

Transfer from State to State _____

MANN & RODGERS FUNERAL HOME, INC.

44 Perkins Street
 Jamaica Plain, Massachusetts 02130
 617-522-2500 • Fax 617-522-4077

STATEMENT OF FUNERAL GOODS AND SERVICES SELECTED

Charges are only for these items that are used. If we are required by law to use any items, we will explain in writing below.

If you selected a funeral which required embalming, such as a funeral with viewing, you may have to pay for embalming. You do not have to pay for embalming you did not approve if you selected arrangements such as a direct cremation or immediate burial. If we charged for embalming, we will explain why below.

SHIPOUT - NO SERVICES

Effective: November 1, 2008

Date of Funeral Service

Funeral Services for

1. PROFESSIONAL SERVICES

Preparation of Deceased \$ 625.00
 Staff Services, including
 arrangements and direction
 of all necessary details \$ 425.00
 Procuring all necessary
 papers and permits \$ 75.00
 Notifying cemetery, clergy,
 and all social services \$ 80.00
 Other preparation of body... \$ _____
Total for Professional Services \$ 1205.00

2. FUNERAL HOME FACILITIES

Use of operating room and
 holding of body \$ 275.00
 Use of home for viewing \$ _____
 Use of facility for
 funeral ceremony \$ _____
 Holding & transfer
 of equipment to church \$ _____
 Refrigeration \$ 125.00
Total for Funeral Home Facilities \$ 400.00

3. TRANSPORTATION

Removal to Funeral Home
 ... Local (15 miles) \$ 275.00
 Funeral Coach \$ 260.00
 Other Automotive
 Equipment \$ _____
 \$ _____
Total for Transportation \$ 535.00

4. MERCHANDISE

Casket as selected \$ 920.00 & up
 Grave Box \$ _____
 Clothing \$ _____
 Cremation Tray \$ _____
 Vault \$ _____
 Urn \$ _____
 Acknowledgment Books \$ _____
 Register Books \$ _____
Total for Merchandise \$ _____

5. CASH ADVANCED

Cemetery charges \$ _____
 Crematory charges \$ _____
 Transportation (Describe) \$ _____
 Clergy honorarium \$ _____
 Church \$ _____
 Organist, Soloist \$ _____
 Musicians honorarium \$ _____
 Flowers \$ _____
 Paid death notices \$ _____
 Certified copies of death certificates
 _____ at \$ _____ each \$ _____
 Gratuities \$ _____
 Hairdresser or barber \$ _____
 Telephone and Telegraph \$ _____
 Medical Examiner \$ _____
 Out of Town Funeral Director \$ _____
 Flower Car \$ _____
 Air Fare *Varies to AL* \$ _____
 Air Tray \$ 230.00
 Box or Vault Installation \$ _____
 Priest at Grave \$ _____
 Estate Fee \$ _____
 Consulate \$ _____
 Prayer Cards \$ _____
 Others \$ _____
Total Cash Advanced \$ _____

SUMMARY OF CHARGES

A. Services \$ 2140.00
 B. Merchandise \$ _____
 C. Cash Advances \$ _____
Total of all selections \$ _____
 Paid at time of or prior to
 arrangements \$ _____
Balance due \$ _____

Reason for embalming

Public viewing and/or services

Transfer from State to State

WE HAVE RECEIVED ALL PRICE LISTS:

(General, Casket and Outer Burial Container)

Payments Required as services rendered

If any law, cemetery, or crematory requirements have required the purchase of any of the items listed above, the law or requirement is explained below.

Cemetery requires a grave box or vault.

MANN & RODGERS FUNERAL HOME, INC.

44 Perkins Street
 Jamaica Plain, Massachusetts 02130
 617-522-2500 • Fax 617-522-4077

STATEMENT OF FUNERAL GOODS AND SERVICES SELECTED

Charges are only for these items that are used. If we are required by law to use any items, we will explain in writing below.

If you selected a funeral which required embalming, such as a funeral with viewing, you may have to pay for embalming. You do not have to pay for embalming you did not approve if you selected arrangements such as a direct cremation or immediate burial. If we charged for embalming, we will explain why below.

CASH ADVANCES (Est.)

Effective: November 1, 2008

Funeral Services for _____

Date of Funeral Service _____

1. PROFESSIONAL SERVICES

Preparation of Deceased \$ _____
 Staff Services, including
 arrangements and direction
 of all necessary details \$ _____
 Procuring all necessary
 papers and permits \$ _____
 Notifying cemetery, clergy,
 and all social services \$ _____
 Other preparation of body ... \$ _____
Total for Professional Services \$ _____

2. FUNERAL HOME FACILITIES

Use of operating room and
 holding of body \$ _____
 Use of home for viewing \$ _____
 Use of facility for
 funeral ceremony \$ _____
 Holding & transfer
 of equipment to church \$ _____
 Refrigeration \$ _____
Total for Funeral Home Facilities \$ _____

3. TRANSPORTATION

Removal to Funeral Home
 ... Local (15 miles) \$ _____
 Funeral Coach \$ _____
 Other Automotive
 Equipment \$ _____
 \$ _____
Total for Transportation \$ _____

4. MERCHANDISE

Casket \$ _____
 Grave Box \$ _____
 Clothing \$ _____
 Cremation Tray \$ _____
 Vault \$ _____
 Urn \$ _____
 Acknowledgment Books \$ _____
 Register Books \$ _____
Total for Merchandise \$ _____

5. CASH ADVANCED

Cemetery charges - Ask for Quotes \$ _____
 Crematory charges - Forest Hills \$ 400.00
 Transportation (Describe) - Limo (1) \$ 345.00
 Clergy honorarium \$ 150.00-450.00
 Church \$ 150.00-450.00
 Organist, \$ 125.00-225.00
 Soloist \$ 125.00-250.00
 Flowers \$ _____
 Paid death notices \$ _____
 Certified copies of death certificates
 _____ at \$ 12.00 - 15.00 each \$ _____
 Gratuities - Custodians \$ 45.00-75.00
 Hairdresser or barber \$ 75.00
 Telephone and Telegraph \$ _____
 Medical Examiner for cremation \$ 75.00
 Out of Town Funeral Director - *Varies* \$ _____
 Flower Car - Same as Limo \$ 345.00
 Air Fare - *Varies* \$ _____
 Air Tray for flight \$ 230.00
 Box or Vault Installation \$ _____
 Clergy at Grave or out of town \$ 80.00-100.00
 Estate Fee \$ _____
 Consulate - normal \$ 170.00 & Up
 Prayer Cards - reg. per hnd. \$ 120.00
 Police Escort \$ _____
Total Cash Advanced \$ _____

SUMMARY OF CHARGES

A. Services \$ _____
 B. Merchandise \$ _____
 C. Cash Advances \$ _____
Total of all selections \$ _____
 Paid at time of or prior to
 arrangements \$ _____
Balance due \$ _____

Reason for embalming _____

Public viewing and/or services

Transfer from State to State

Air Shipment

WE HAVE RECEIVED ALL PRICE LISTS:

(General, Casket and Outer Burial Container)

If any law, cemetery, or crematory requirements have required the purchase of any of the items listed above, the law or requirement is explained below.
 Cemetery requires a grave box or vault.